



# Meridian Solar Farm

EN010169

Volume 6

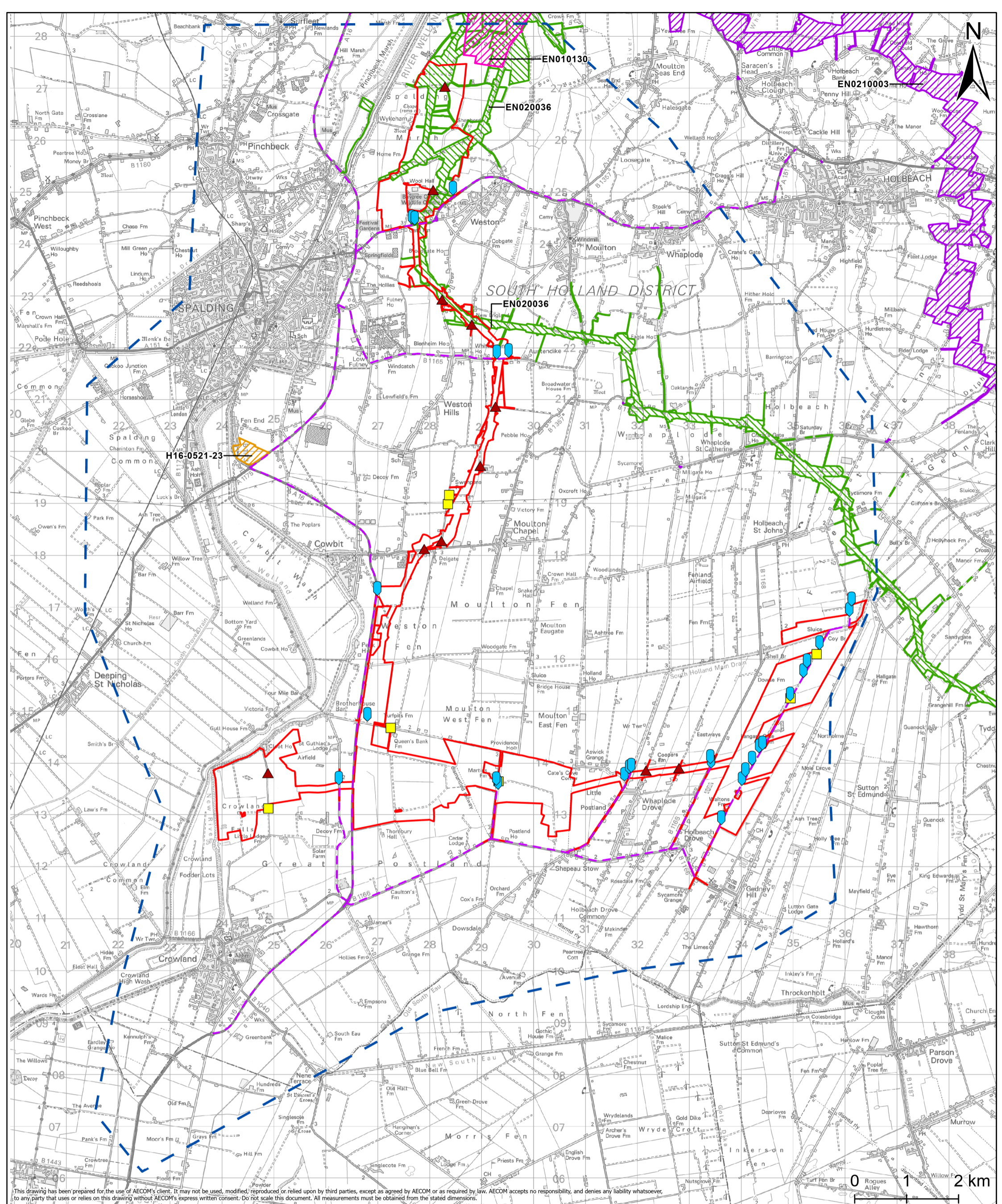
Environmental Statement

6.2 ES Figure 15-6:  
Cumulative Schemes

APFP Regulation 5(2)(a)

Infrastructure Planning (Applications:  
Prescribed Forms and Procedure)  
Regulations 2009

March 2026



This drawing has been prepared for the use of AECOM's client. It may not be used, modified, reproduced or relied upon by third parties, except as agreed by AECOM or as required by law. AECOM accepts no responsibility, and denies any liability whatsoever, to any party that uses or relies on this drawing without AECOM's express written consent. Do not scale this document. All measurements must be obtained from the stated dimensions.

**Project Title**  
Meridian Solar Farm

**Map Title**  
Environmental Statement  
Figure 15-6: Cumulative Schemes

|          |         |       |          |
|----------|---------|-------|----------|
| Scale    | Version | Drawn | Reviewed |
| 1:65,000 | 0       | LL    | AK       |

**Legend**

- Order Limits
- Traffic and Access Study Area Boundary
- Cumulative HGV Traffic Routes

**ES Cumulative Schemes**

- EN010130
- EN020036
- EN0210003
- H16-0521-23

**New and Upgraded Existing Accesses**

- Construction, Operation & Decommissioning Use
- ▲ Crossing with Internal Haul Route
- Operational Use Only

Date: 20/03/2026

**Copyright**  
Contains OS data © Crown Copyright and database right 2026. Contains data from OS Zoomstack. Reproduced from Ordnance Survey digital map data © Crown copyright 2025. All rights reserved. Licence number AC0000808122. Cumulative schemes boundaries are indicative only and digitised based upon publicly available information from South Holland District Council, Lincolnshire County Council, Fenland District Council, Kings Lynn & West Norfolk District Council and South Kesteven District Council, 2025.

